

## N-(4-Chlorophenyl)quinolin-2-amine

Zainal Abidin Hasan,<sup>a</sup> Zanariah Abdullah,<sup>a‡</sup> Hairul Anuar Tajuddin,<sup>a</sup> Seik Weng Ng<sup>a,b</sup> and Edward R. T. Tiekink<sup>a\*</sup><sup>a</sup>Department of Chemistry, University of Malaya, 50603 Kuala Lumpur, Malaysia, and <sup>b</sup>Chemistry Department, Faculty of Science, King Abdulaziz University, PO Box 80203 Jeddah, Saudi Arabia

Correspondence e-mail: edward.tiekink@gmail.com

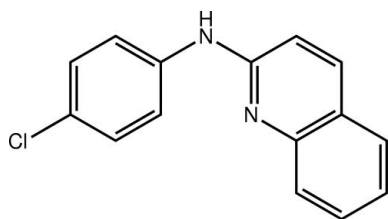
Received 24 October 2011; accepted 29 October 2011

Key indicators: single-crystal X-ray study;  $T = 100$  K; mean  $\sigma(\text{C}-\text{C}) = 0.003$  Å;  $R$  factor = 0.052;  $wR$  factor = 0.134; data-to-parameter ratio = 16.3.

There is a twist in the title molecule,  $\text{C}_{15}\text{H}_{11}\text{ClN}_2$ , as seen in the dihedral angle of  $18.85$  ( $9^\circ$ ) between the quinoline and benzene rings. A short  $\text{C}-\text{H}\cdots\text{N}$  contact arises from this conformation and the amine H and quinoline N atoms are directed towards opposite sides of the molecule. In the crystal, supramolecular layers in the  $ab$  plane are mediated by  $\text{C}-\text{H}\cdots\pi$  interactions.

## Related literature

For the structure of a related pyridine amine derivative, see: Aznan Akhmad *et al.* (2010).



## Experimental

## Crystal data

$\text{C}_{15}\text{H}_{11}\text{ClN}_2$   
 $M_r = 254.71$   
 Monoclinic,  $P2_1/c$   
 $a = 5.9565$  (4) Å  
 $b = 7.9936$  (6) Å  
 $c = 25.0603$  (18) Å  
 $\beta = 92.744$  (1)°

$V = 1191.85$  (15) Å<sup>3</sup>  
 $Z = 4$   
 Mo  $K\alpha$  radiation  
 $\mu = 0.30$  mm<sup>-1</sup>  
 $T = 100$  K  
 $0.2 \times 0.1 \times 0.1$  mm

## Data collection

Bruker SMART APEX CCD diffractometer  
 Absorption correction: multi-scan (SADABS; Sheldrick, 1996)  
 $T_{\min} = 0.872$ ,  $T_{\max} = 1$

10754 measured reflections  
 2726 independent reflections  
 2460 reflections with  $I > 2\sigma(I)$   
 $R_{\text{int}} = 0.030$

## Refinement

$R[F^2 > 2\sigma(F^2)] = 0.052$   
 $wR(F^2) = 0.134$   
 $S = 1.11$   
 2726 reflections  
 167 parameters  
 1 restraint

H atoms treated by a mixture of independent and constrained refinement  
 $\Delta\rho_{\max} = 0.50$  e Å<sup>-3</sup>  
 $\Delta\rho_{\min} = -0.32$  e Å<sup>-3</sup>

Table 1

Hydrogen-bond geometry (Å, °).

$\text{Cg}1$ ,  $\text{Cg}2$  and  $\text{Cg}3$  are the centroids of the  $\text{N}1, \text{C}7-\text{C}10$ ,  $\text{C}15, \text{C}10-\text{C}15$  and  $\text{C}1-\text{C}6$  rings, respectively.

$D-\text{H}\cdots A$	$D-\text{H}$	$\text{H}\cdots A$	$D\cdots A$	$D-\text{H}\cdots A$
$\text{C}2-\text{H}2\cdots\text{N}2$	0.95	2.39	2.961 (3)	118
$\text{C}3-\text{H}3\cdots\text{Cg}1^i$	0.95	2.94	3.734 (3)	142
$\text{C}9-\text{H}9\cdots\text{Cg}2^{ii}$	0.95	2.79	3.383 (3)	121
$\text{C}14-\text{H}14\cdots\text{Cg}2^i$	0.95	2.83	3.440 (3)	123
$\text{C}6-\text{H}6\cdots\text{Cg}3^{ii}$	0.95	2.81	3.590 (3)	140

Symmetry codes: (i)  $-x + 1, y - \frac{1}{2}, -z + \frac{1}{2}$ ; (ii)  $-x + 2, y + \frac{1}{2}, -z + \frac{1}{2}$ .

Data collection: APEX2 (Bruker, 2009); cell refinement: SAINT (Bruker, 2009); data reduction: SAINT; program(s) used to solve structure: SHELXS97 (Sheldrick, 2008); program(s) used to refine structure: SHELXL97 (Sheldrick, 2008); molecular graphics: ORTEP-3 (Farrugia, 1997) and DIAMOND (Brandenburg, 2006); software used to prepare material for publication: publCIF (Westrip, 2010).

We thank the University of Malaya (grant No. RG027/09AFR) for supporting this study.

Supplementary data and figures for this paper are available from the IUCr electronic archives (Reference: HB6472).

## References

- Aznan Akhmad, M. A., Abdullah, Z., Fairuz, Z. A., Ng, S. W. & Tiekink, E. R. T. (2010). *Acta Cryst.* **E66**, o2400.  
 Brandenburg, K. (2006). *DIAMOND*. Crystal Impact GbR, Bonn, Germany.  
 Bruker (2009). *APEX2* and *SAINTE*. Bruker AXS Inc., Madison, Wisconsin, USA.  
 Farrugia, L. J. (1997). *J. Appl. Cryst.* **30**, 565.  
 Sheldrick, G. M. (1996). *SADABS*. University of Göttingen, Germany.  
 Sheldrick, G. M. (2008). *Acta Cryst.* **A64**, 112–122.  
 Westrip, S. P. (2010). *J. Appl. Cryst.* **43**, 920–925.

‡ Additional correspondence author, e-mail: zana@um.edu.my.

**supplementary materials**

*Acta Cryst.* (2011). E67, o3175 [ doi:10.1107/S1600536811045521 ]

## *N*-(4-Chlorophenyl)quinolin-2-amine

Z. A. Hasan, Z. Abdullah, H. A. Tajuddin, S. W. Ng and E. R. T. Tiekink

### Comment

As a part of on-going studies of nitropyridine derivatives (Aznan Akhmad *et al.*, 2010), the title compound was synthesized and structurally characterized. In (I), Fig. 1, the dihedral angle between the quinolinyl [r.m.s. deviation for the 10 non-hydrogen atoms = 0.022 Å] and benzene rings is 18.85 (9) Å indicating a twist in the molecule. The amine-H and quinolinyl-N atoms are directed towards opposite sides of the molecule. The quinolinyl-N atom participates in a close intramolecular C—H...N contact, Table 1. The amine-H atom is flanked by aromatic residues precluding its participation in close intermolecular contacts. The molecules are connected into supramolecular layers in the *ab* plane *via* C—H... $\pi$  interactions, Fig. 2 and Table 1. Layers are connected along the *c* axis *via* weak C—H...Cl contacts, with the shortest of these being a C12—H12...Cl1<sup>i</sup> contact of 2.92 Å [C12...Cl1<sup>i</sup> = 3.655 (3) Å with angle at H12 = 135 °, for *i*: 1 + *x*, 1/2 - *y*, -1/2 + *z*], Fig. 3.

### Experimental

2-Chloroquinoline (1.0 g, 0.006 mol) was added to a solution of 4-chloroaniline (0.78 g, 0.006 mol) in ethanol (10 ml), and the mixture was refluxed for 7 h. The mixture was then cooled and the solvent evaporated off. The residue was dissolved in water and then extracted with diethyl ether (3 x 10 ml). The ether extracts were washed with water (3 x 10 ml) and dried over anhydrous sodium sulfate. Evaporation of the solvent gave the product and crystallization from its ethanol solution gave colourless prisms.

### Refinement

Carbon-bound hydrogen atoms were placed at calculated positions (C—H 0.95 Å) and were treated as riding on their parent carbon atoms, with  $U(\text{H})$  set to 1.2 times  $U_{\text{eq}}(\text{C})$ . The amine-H atom was refined with N—H = 0.86±0.01 Å with refined  $U_{\text{iso}}$ .

### Figures

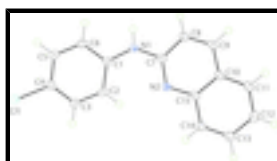


Fig. 1. The molecular structure of (I) showing displacement ellipsoids at the 50% probability level.

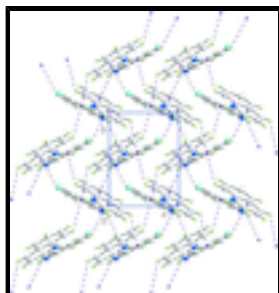


Fig. 2. Layers in the *ab* plane in (I) sustained by C—H... $\pi$  interactions shown as orange dashed lines.

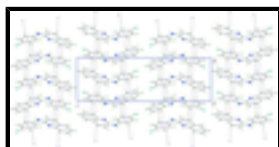


Fig. 3. Unit-cell contents for (I) shown in projection down the *a* axis highlighting the stacking of layers. The C—H... $\pi$  interactions are shown as orange dashed lines.

### *N*-(4-Chlorophenyl)quinolin-2-amine

#### Crystal data

$C_{15}H_{11}ClN_2$

$M_r = 254.71$

Monoclinic,  $P2_1/c$

Hall symbol: -P 2ybc

$a = 5.9565$  (4) Å

$b = 7.9936$  (6) Å

$c = 25.0603$  (18) Å

$\beta = 92.744$  (1)°

$V = 1191.85$  (15) Å<sup>3</sup>

$Z = 4$

$F(000) = 528$

$D_x = 1.419$  Mg m<sup>-3</sup>

Mo  $K\alpha$  radiation,  $\lambda = 0.71073$  Å

Cell parameters from 5281 reflections

$\theta = 2.7$ – $28.8$ °

$\mu = 0.30$  mm<sup>-1</sup>

$T = 100$  K

Prism, colourless

$0.2 \times 0.1 \times 0.1$  mm

#### Data collection

Bruker SMART APEX CCD  
diffractometer

Radiation source: fine-focus sealed tube  
graphite

$\omega$  scans

Absorption correction: multi-scan  
(*SADABS*; Sheldrick, 1996)

$T_{\min} = 0.872$ ,  $T_{\max} = 1$

10754 measured reflections

2726 independent reflections

2460 reflections with  $I > 2\sigma(I)$

$R_{\text{int}} = 0.030$

$\theta_{\max} = 27.5$ °,  $\theta_{\min} = 1.6$ °

$h = -7 \rightarrow 7$

$k = -9 \rightarrow 10$

$l = -32 \rightarrow 31$

#### Refinement

Refinement on  $F^2$

Least-squares matrix: full

$R[F^2 > 2\sigma(F^2)] = 0.052$

Primary atom site location: structure-invariant direct  
methods

Secondary atom site location: difference Fourier map

Hydrogen site location: inferred from neighbouring  
sites

$wR(F^2) = 0.134$

$S = 1.11$

2726 reflections

167 parameters

1 restraint

H atoms treated by a mixture of independent and constrained refinement

$$w = 1/[\sigma^2(F_o^2) + (0.0396P)^2 + 2.5503P]$$

$$\text{where } P = (F_o^2 + 2F_c^2)/3$$

$$(\Delta/\sigma)_{\max} = 0.001$$

$$\Delta\rho_{\max} = 0.50 \text{ e } \text{\AA}^{-3}$$

$$\Delta\rho_{\min} = -0.32 \text{ e } \text{\AA}^{-3}$$

### Special details

**Refinement.** Refinement of  $F^2$  against ALL reflections. The weighted  $R$ -factor  $wR$  and goodness of fit  $S$  are based on  $F^2$ , conventional  $R$ -factors  $R$  are based on  $F$ , with  $F$  set to zero for negative  $F^2$ . The threshold expression of  $F^2 > 2\sigma(F^2)$  is used only for calculating  $R$ -factors(gt) *etc.* and is not relevant to the choice of reflections for refinement.  $R$ -factors based on  $F^2$  are statistically about twice as large as those based on  $F$ , and  $R$ -factors based on ALL data will be even larger.

### Fractional atomic coordinates and isotropic or equivalent isotropic displacement parameters ( $\text{\AA}^2$ )

	$x$	$y$	$z$	$U_{\text{iso}}^*/U_{\text{eq}}$
C11	0.28861 (10)	0.29464 (9)	0.44653 (2)	0.02527 (18)
N1	0.8994 (3)	0.5543 (3)	0.28636 (8)	0.0188 (4)
H1n	1.015 (4)	0.601 (4)	0.3019 (11)	0.032 (9)*
N2	0.7753 (3)	0.4313 (2)	0.20524 (8)	0.0162 (4)
C1	0.7450 (4)	0.4911 (3)	0.32189 (9)	0.0155 (4)
C2	0.5367 (4)	0.4212 (3)	0.30617 (9)	0.0170 (5)
H2	0.4911	0.4148	0.2694	0.020*
C3	0.3967 (4)	0.3611 (3)	0.34480 (9)	0.0174 (5)
H3	0.2554	0.3131	0.3344	0.021*
C4	0.4632 (4)	0.3714 (3)	0.39834 (9)	0.0173 (5)
C5	0.6687 (4)	0.4413 (3)	0.41464 (9)	0.0177 (5)
H5	0.7132	0.4479	0.4515	0.021*
C6	0.8072 (4)	0.5010 (3)	0.37631 (9)	0.0175 (5)
H6	0.9475	0.5498	0.3871	0.021*
C7	0.9269 (4)	0.5194 (3)	0.23314 (9)	0.0161 (5)
C8	1.1286 (4)	0.5837 (3)	0.21166 (10)	0.0187 (5)
H8	1.2304	0.6492	0.2332	0.022*
C9	1.1715 (4)	0.5496 (3)	0.16038 (10)	0.0187 (5)
H9	1.3059	0.5891	0.1458	0.022*
C10	1.0152 (4)	0.4543 (3)	0.12822 (9)	0.0165 (5)
C11	1.0462 (4)	0.4160 (3)	0.07422 (9)	0.0192 (5)
H11	1.1799	0.4505	0.0582	0.023*
C12	0.8849 (4)	0.3294 (3)	0.04451 (9)	0.0202 (5)
H12	0.9065	0.3045	0.0080	0.024*
C13	0.6878 (4)	0.2778 (3)	0.06850 (10)	0.0195 (5)
H13	0.5754	0.2194	0.0478	0.023*
C14	0.6552 (4)	0.3104 (3)	0.12125 (9)	0.0181 (5)
H14	0.5225	0.2718	0.1368	0.022*
C15	0.8163 (4)	0.4006 (3)	0.15264 (9)	0.0151 (4)

## supplementary materials

---

### Atomic displacement parameters ( $\text{\AA}^2$ )

	$U^{11}$	$U^{22}$	$U^{33}$	$U^{12}$	$U^{13}$	$U^{23}$
C11	0.0228 (3)	0.0326 (4)	0.0205 (3)	-0.0052 (3)	0.0018 (2)	0.0039 (2)
N1	0.0163 (10)	0.0204 (11)	0.0195 (10)	-0.0052 (8)	-0.0010 (8)	-0.0027 (8)
N2	0.0159 (9)	0.0145 (9)	0.0181 (9)	-0.0013 (7)	-0.0003 (7)	0.0009 (7)
C1	0.0143 (10)	0.0114 (10)	0.0207 (11)	0.0013 (8)	0.0012 (8)	-0.0004 (8)
C2	0.0172 (11)	0.0155 (11)	0.0179 (11)	0.0027 (9)	-0.0025 (8)	-0.0019 (9)
C3	0.0146 (10)	0.0155 (11)	0.0221 (11)	0.0017 (9)	-0.0001 (8)	-0.0009 (9)
C4	0.0170 (11)	0.0146 (11)	0.0204 (11)	0.0007 (9)	0.0036 (9)	0.0008 (9)
C5	0.0185 (11)	0.0157 (11)	0.0187 (11)	0.0035 (9)	-0.0017 (8)	-0.0023 (9)
C6	0.0153 (10)	0.0146 (11)	0.0223 (11)	0.0002 (8)	-0.0023 (8)	-0.0032 (9)
C7	0.0155 (10)	0.0138 (11)	0.0189 (11)	0.0017 (9)	-0.0008 (8)	0.0023 (9)
C8	0.0171 (11)	0.0155 (11)	0.0232 (12)	-0.0031 (9)	-0.0025 (9)	0.0017 (9)
C9	0.0147 (10)	0.0164 (11)	0.0250 (12)	-0.0023 (9)	0.0012 (9)	0.0037 (9)
C10	0.0162 (11)	0.0129 (11)	0.0204 (11)	0.0004 (9)	0.0011 (8)	0.0035 (9)
C11	0.0176 (11)	0.0179 (12)	0.0223 (12)	0.0000 (9)	0.0039 (9)	0.0045 (9)
C12	0.0256 (12)	0.0183 (12)	0.0169 (11)	0.0035 (10)	0.0027 (9)	0.0027 (9)
C13	0.0200 (11)	0.0165 (11)	0.0215 (11)	-0.0009 (9)	-0.0019 (9)	0.0019 (9)
C14	0.0180 (11)	0.0150 (11)	0.0211 (11)	-0.0023 (9)	0.0000 (9)	0.0023 (9)
C15	0.0156 (10)	0.0117 (10)	0.0179 (11)	0.0018 (8)	0.0002 (8)	0.0040 (8)

### Geometric parameters ( $\text{\AA}$ , $^\circ$ )

C11—C4	1.742 (2)	C7—C8	1.435 (3)
N1—C7	1.380 (3)	C8—C9	1.350 (3)
N1—C1	1.404 (3)	C8—H8	0.9500
N1—H1n	0.858 (10)	C9—C10	1.423 (3)
N2—C7	1.319 (3)	C9—H9	0.9500
N2—C15	1.374 (3)	C10—C11	1.408 (3)
C1—C2	1.400 (3)	C10—C15	1.425 (3)
C1—C6	1.398 (3)	C11—C12	1.374 (3)
C2—C3	1.393 (3)	C11—H11	0.9500
C2—H2	0.9500	C12—C13	1.406 (3)
C3—C4	1.383 (3)	C12—H12	0.9500
C3—H3	0.9500	C13—C14	1.370 (3)
C4—C5	1.389 (3)	C13—H13	0.9500
C5—C6	1.381 (3)	C14—C15	1.410 (3)
C5—H5	0.9500	C14—H14	0.9500
C6—H6	0.9500		
C7—N1—C1	130.7 (2)	C9—C8—C7	119.0 (2)
C7—N1—H1n	113 (2)	C9—C8—H8	120.5
C1—N1—H1n	114 (2)	C7—C8—H8	120.5
C7—N2—C15	117.1 (2)	C8—C9—C10	119.9 (2)
C2—C1—C6	119.1 (2)	C8—C9—H9	120.0
C2—C1—N1	124.3 (2)	C10—C9—H9	120.0
C6—C1—N1	116.6 (2)	C11—C10—C9	123.3 (2)

C3—C2—C1	119.6 (2)	C11—C10—C15	119.8 (2)
C3—C2—H2	120.2	C9—C10—C15	116.9 (2)
C1—C2—H2	120.2	C12—C11—C10	120.7 (2)
C4—C3—C2	120.0 (2)	C12—C11—H11	119.7
C4—C3—H3	120.0	C10—C11—H11	119.7
C2—C3—H3	120.0	C11—C12—C13	119.5 (2)
C5—C4—C3	121.1 (2)	C11—C12—H12	120.3
C5—C4—C11	119.00 (18)	C13—C12—H12	120.3
C3—C4—C11	119.92 (18)	C14—C13—C12	121.1 (2)
C6—C5—C4	118.8 (2)	C14—C13—H13	119.5
C6—C5—H5	120.6	C12—C13—H13	119.5
C4—C5—H5	120.6	C13—C14—C15	120.8 (2)
C5—C6—C1	121.3 (2)	C13—C14—H14	119.6
C5—C6—H6	119.3	C15—C14—H14	119.6
C1—C6—H6	119.3	N2—C15—C14	118.6 (2)
N2—C7—N1	120.7 (2)	N2—C15—C10	123.2 (2)
N2—C7—C8	123.8 (2)	C14—C15—C10	118.2 (2)
N1—C7—C8	115.5 (2)		
C7—N1—C1—C2	-23.3 (4)	N1—C7—C8—C9	177.6 (2)
C7—N1—C1—C6	157.0 (2)	C7—C8—C9—C10	1.3 (4)
C6—C1—C2—C3	-0.8 (3)	C8—C9—C10—C11	178.9 (2)
N1—C1—C2—C3	179.6 (2)	C8—C9—C10—C15	0.6 (3)
C1—C2—C3—C4	0.3 (3)	C9—C10—C11—C12	-177.3 (2)
C2—C3—C4—C5	0.1 (4)	C15—C10—C11—C12	0.9 (3)
C2—C3—C4—C11	-179.50 (18)	C10—C11—C12—C13	-0.4 (4)
C3—C4—C5—C6	0.0 (4)	C11—C12—C13—C14	-0.9 (4)
C11—C4—C5—C6	179.60 (18)	C12—C13—C14—C15	1.7 (4)
C4—C5—C6—C1	-0.5 (3)	C7—N2—C15—C14	-178.4 (2)
C2—C1—C6—C5	0.9 (3)	C7—N2—C15—C10	2.2 (3)
N1—C1—C6—C5	-179.4 (2)	C13—C14—C15—N2	179.5 (2)
C15—N2—C7—N1	-179.4 (2)	C13—C14—C15—C10	-1.0 (3)
C15—N2—C7—C8	0.0 (3)	C11—C10—C15—N2	179.2 (2)
C1—N1—C7—N2	10.6 (4)	C9—C10—C15—N2	-2.5 (3)
C1—N1—C7—C8	-168.8 (2)	C11—C10—C15—C14	-0.2 (3)
N2—C7—C8—C9	-1.8 (4)	C9—C10—C15—C14	178.1 (2)

Hydrogen-bond geometry ( $\text{\AA}$ ,  $^\circ$ )

Cg1 Cg2 and Cg3 are the centroids of of the N1,C7–C10,C15, C10–C15 and C1–C6 rings, respectively.

$D-H\cdots A$	$D-H$	$H\cdots A$	$D\cdots A$	$D-H\cdots A$
C2—H2 $\cdots$ N2	0.95	2.39	2.961 (3)	118
C3—H3 $\cdots$ Cg1 <sup>i</sup>	0.95	2.94	3.734 (3)	142
C9—H9 $\cdots$ Cg2 <sup>ii</sup>	0.95	2.79	3.383 (3)	121
C14—H14 $\cdots$ Cg2 <sup>i</sup>	0.95	2.83	3.440 (3)	123
C6—H6 $\cdots$ Cg3 <sup>ii</sup>	0.95	2.81	3.590 (3)	140

Symmetry codes: (i)  $-x+1, y-1/2, -z+1/2$ ; (ii)  $-x+2, y+1/2, -z+1/2$ .

Fig. 1

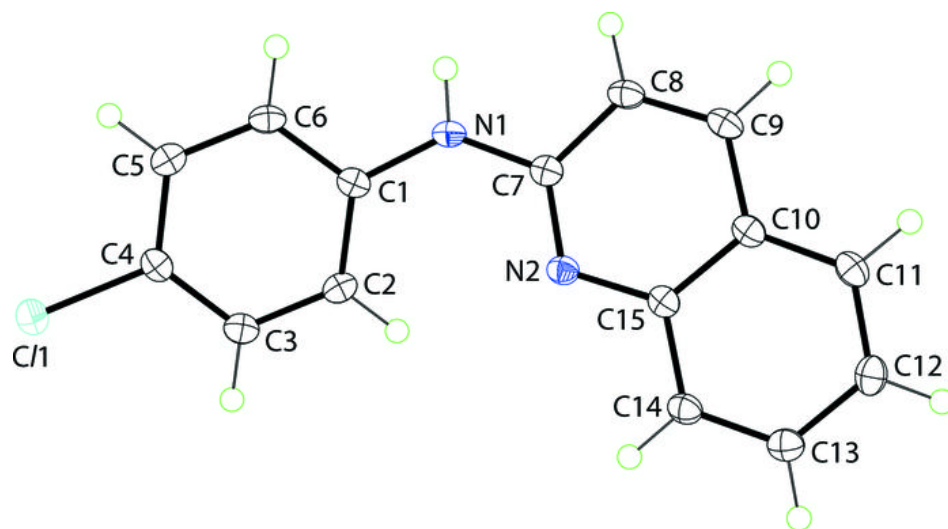




Fig. 2

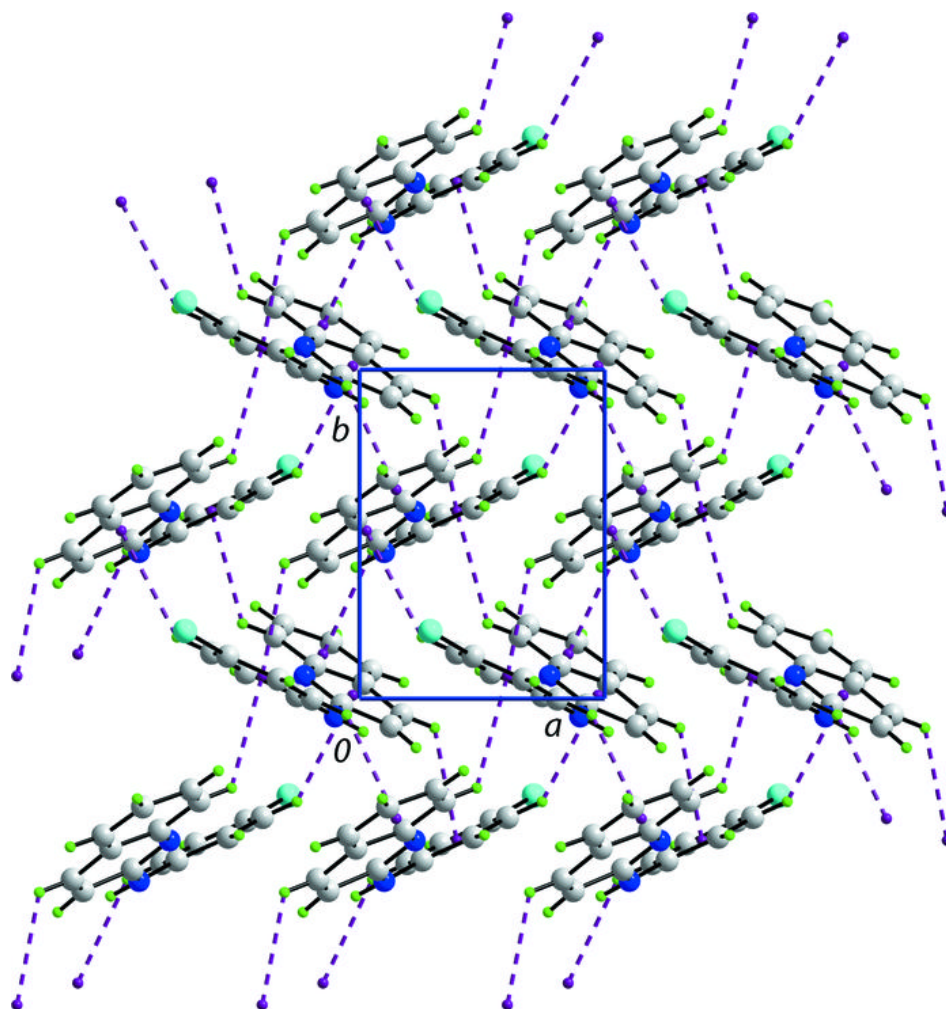


Fig. 3

